

How to SSH to `nice.fas.harvard.edu` from Windows using PuTTY

Recall that `nice.fas.harvard.edu` refers to a cluster of computers running Linux on which you have an account (your so-called FAS account). Even though those computers are locked away in the basement of the Science Center (and might not even have monitors or keyboards), you can still “open a shell” on them in order to execute commands remotely via a protocol called SSH.¹ On this cluster you have several megabytes of storage space (your so-called home directory). To SSH to `nice.fas.harvard.edu`, then, is to access your account and, in turn, home directory on this cluster remotely. All you need is an SSH client, a program that “speaks” SSH.

You’re welcome to use any SSH client for CS 50.
This document explains how to install and use PuTTY, freeware for Windows.²

Table of Contents

Installing PuTTY	1
Launching PuTTY	2
Creating a Session	3
Using PuTTY.....	4

¹ A “protocol” is essentially a language that computers speak in order to communicate.

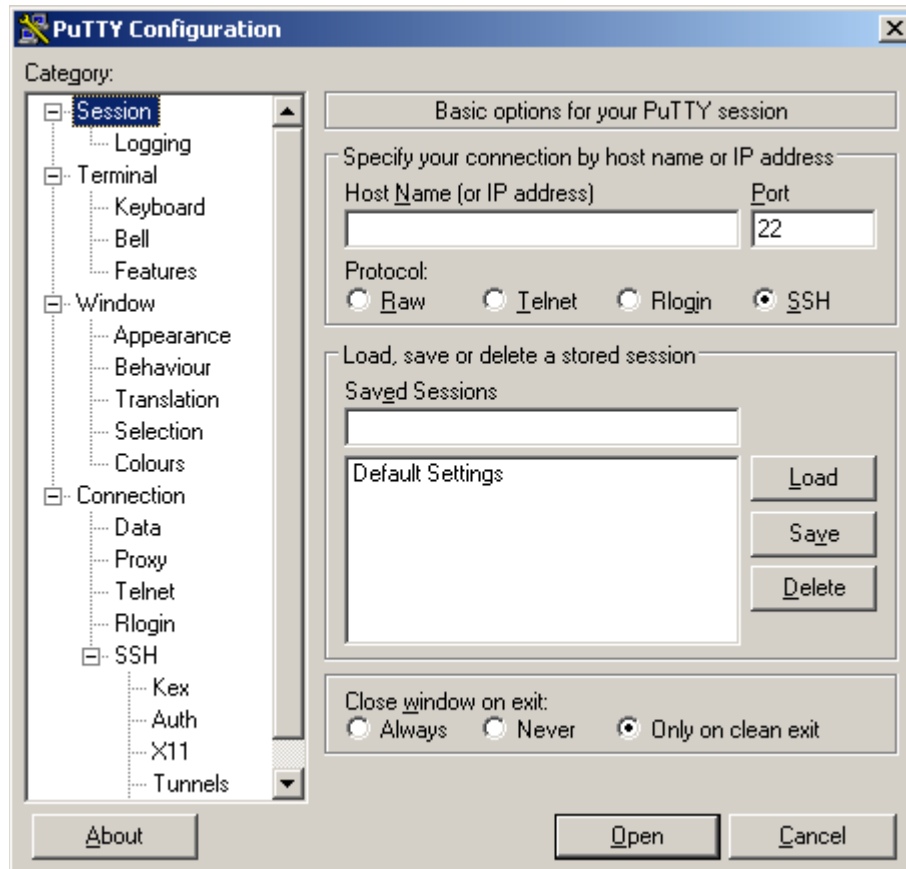
² A popular alternative on campus is SecureCRT, which is also available for download via the course’s website under **Software**.

Installing PuTTY

If PuTTY is not already installed on your computer, download PuTTY to your desktop via the course's website under **Software**. That's it! What you've downloaded is PuTTY itself; it doesn't have an installer proper.

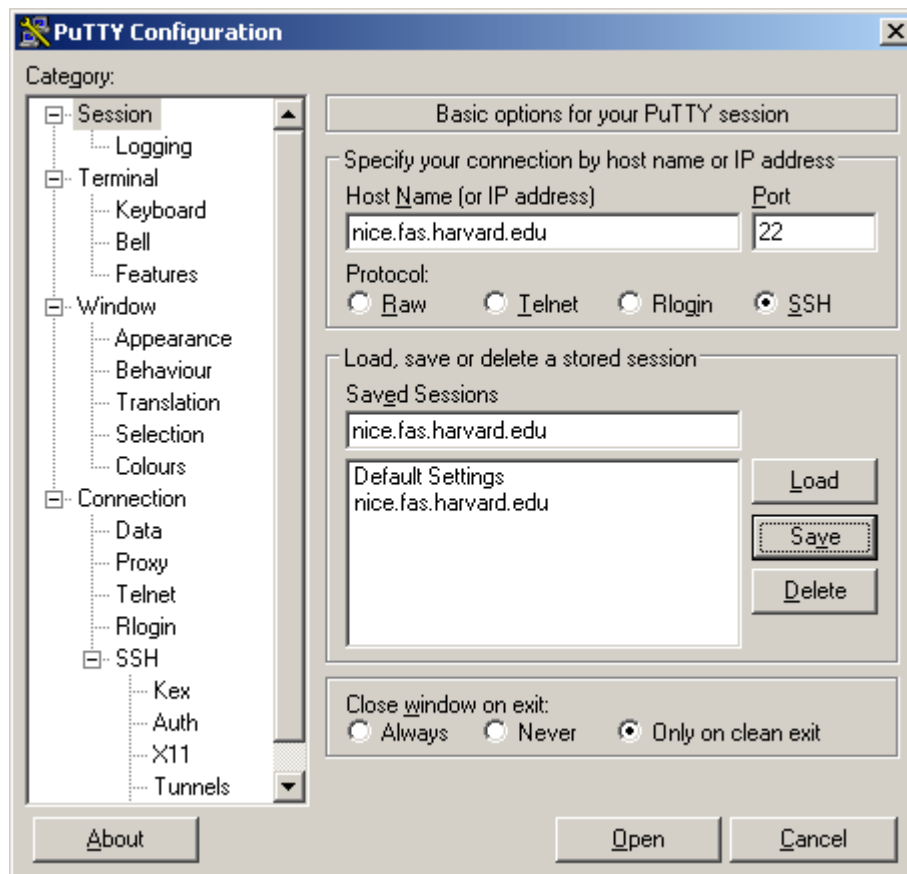
Launching PuTTY

Launch PuTTY via its icon. You should see a window like the below appear.



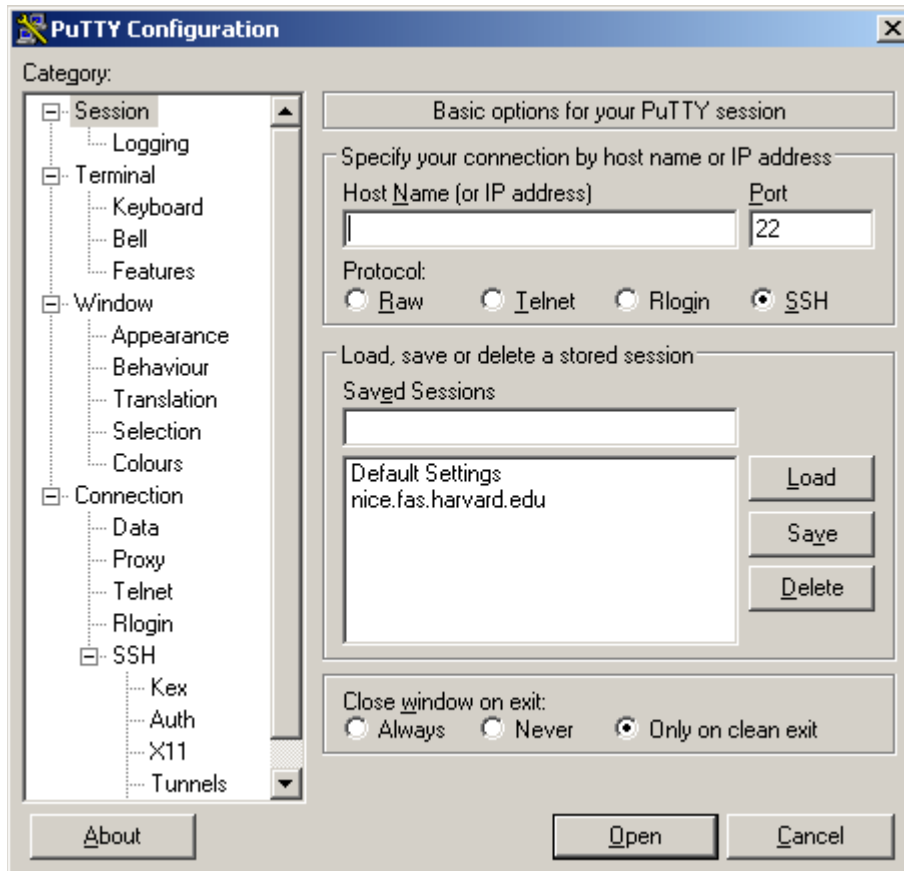
Creating a Session

Right after launching PuTTY, go ahead and type `nice.fas.harvard.edu` under **Host Name (or IP address)**. Then type the same under **Saved Sessions** (so that you needn't type it again). Ensure that the circle to the left of **SSH** is selected. Then click **Save**. Your window should then resemble the below.

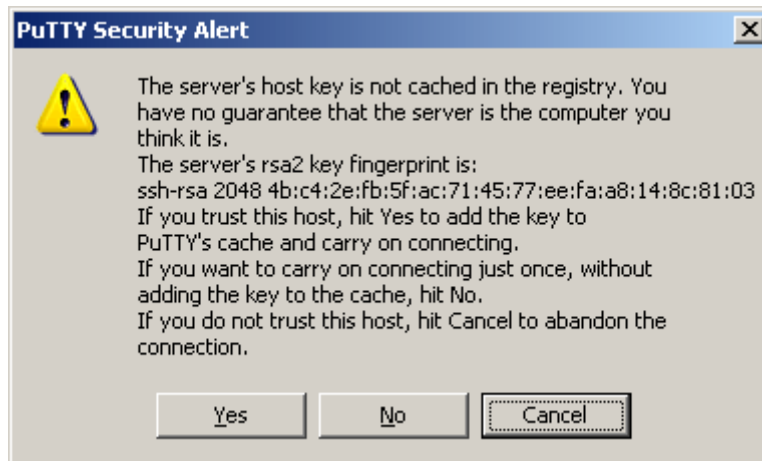


Using PuTTY

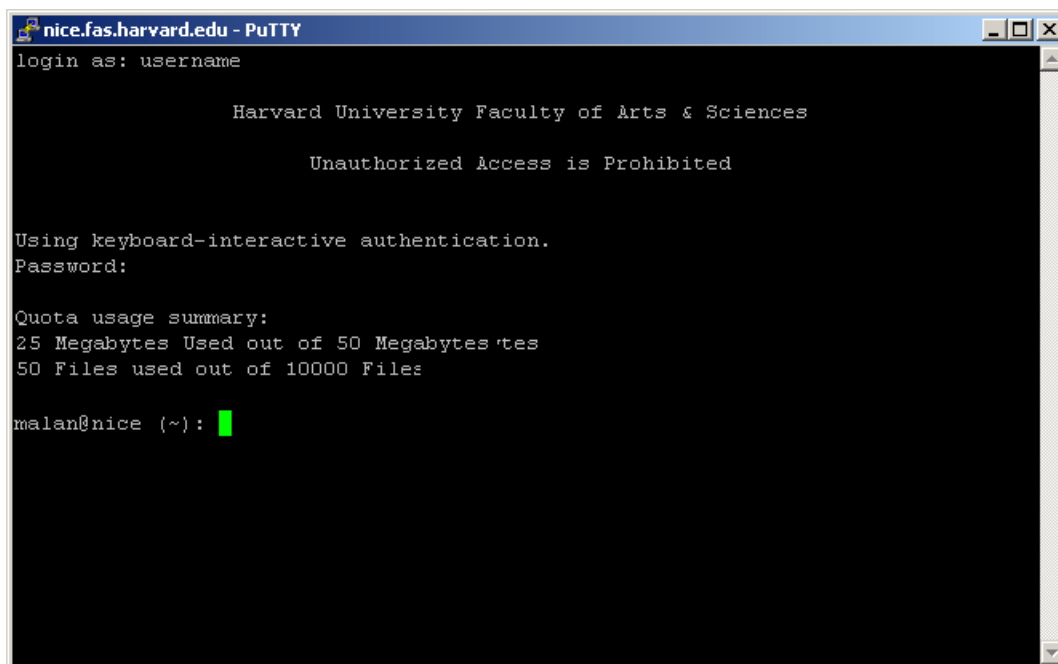
Assuming you've already created a session for `nice.fas.harvard.edu`, you should see a window like the below upon launching PuTTY.



Highlight `nice.fas.harvard.edu` under **Saved Sessions** by clicking it, then click **Load**, then click **Open**. Alternatively, just double-click `nice.fas.harvard.edu` under **Saved Sessions**. If you then see a window like the below, click **Yes**.



Provide your username (aka login) and password when prompted. A window like the below should then appear, possibly with additional text and a different prompt.



At this point, you have successfully SSHed to `nice.fas.harvard.edu` and are thus in control of your account! To execute a command, type it (e.g., `nano questions.txt`), then hit **Enter**.

May that you never have to read all of these directions again!